

BYLAW NO. 01-2019
A BYLAW TO AMEND BYLAW 2004-3, ZONING
BYLAW

A Bylaw of the Rural Municipality of Keys No 303 in the Province of Saskatchewan to create a bylaw to amend the Zoning Bylaw.

A BYLAW TO AMEND BYLAW 2004-3, THE ZONING BYLAW

The Council of the Rural Municipality of Keys No 303 in the Province of Saskatchewan enacts as follows:

1. THAT the following be amended as follows:
 - a. Part 4, Zoning District Map, Insert 1 be Amended by Rezoning from "A-Agricultural" to "SR- Summer Resort" on a portion of the SW ¼ 30-33-03-W2M, also currently being parcel B, plan 102163126 as shown on the attached map;
 - b. Parcel B, plan 102163126 shall be attached to and form part of this bylaw as "Amendment B";

2. Coming Into Force

This bylaw shall come into force and take effect when approved by the Minister.

[SEAL]

Reeve

Administrator

Read a third time and adopted
this ____ day of _____

Administrator

Amendment B

PLAN OF PROPOSED SUBDIVISION

of Part of
 Parcel B, Plan 102163126
 Organized Hamlet of Crystal Lake
 Saskatchewan
 Scott Assié, MCIP, RPP
 2015 - 2018
 Scale 1:1000

OWNER(S):

Dean Earl Redenbach
 Emilia Lydia Popelka
 Sharon Eileen Klatt
 Desires Sandra Orem

Measurements are in metres and decimals thereof.
 Measurements are approximate and may vary by ±0.5m.
 Area to be approved is outlined in bold dashed line
 and contains 1.13 ha (2.79 acs).

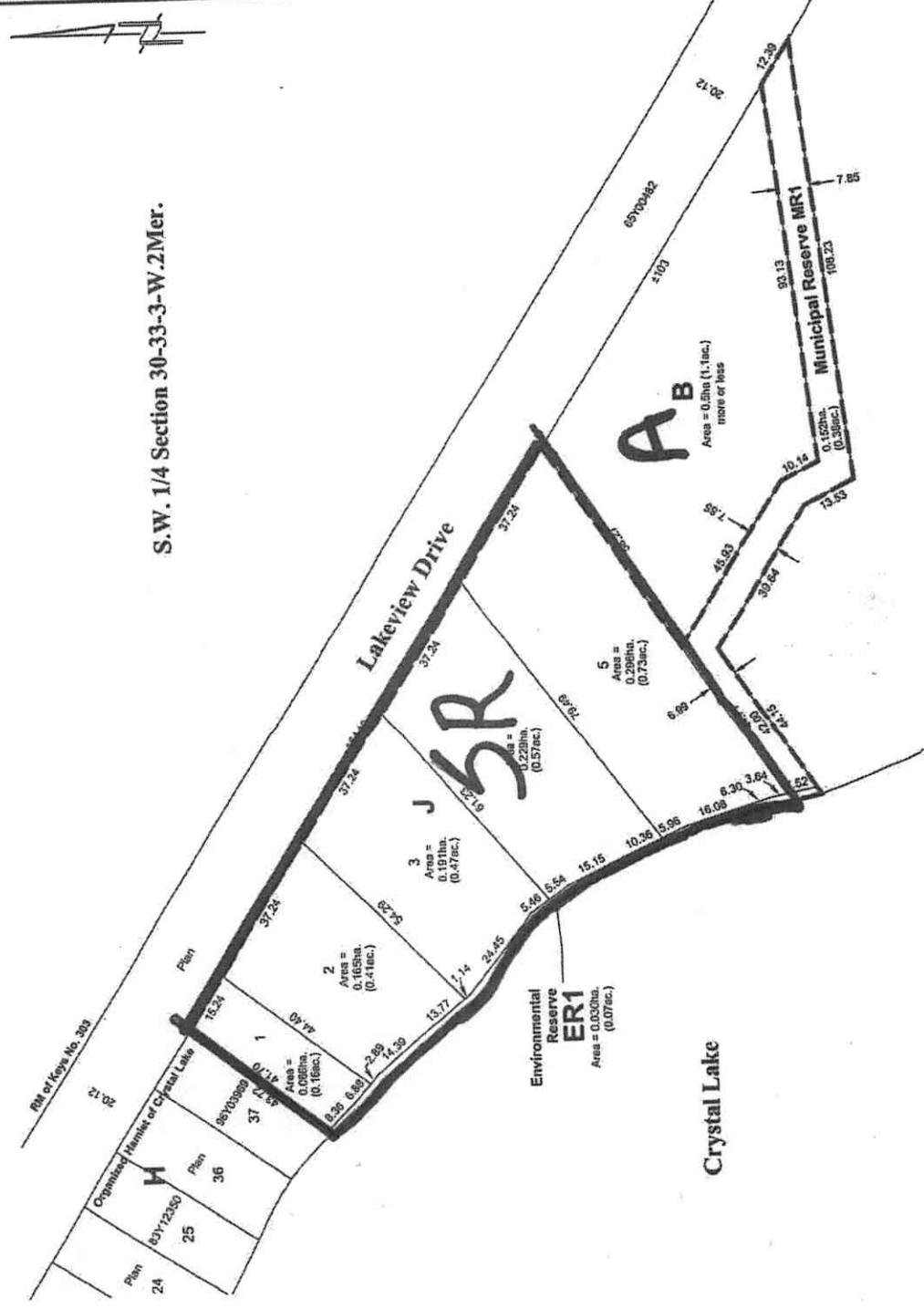
REV.	REVISION	DATE	INITIALS
7	Revised lots	Sep. 21, 2018	RH - HM
6	Revised lots	Aug. 23, 2018	RH - HM
5	Revised lots	May 30, 2017	RH - HM
4	Revised lots	May 29, 2017	RH - HM
3	Revised lots	May 23, 2017	CJ - HM
2	Revised lots	Mar. 21, 2017	RH - HM
1	Revised lots	Oct. 24, 2016	CJ - SA
0	Issued	Jun. 8, 2015	RH - HM

JOB No.: 179840 File:179840PR-R7
 Preliminary Survey: n/a

Dated at Regina in the
 Province of Saskatchewan this
 21st day of September, 2018.

SCOTT ASSIE
 385
 REGISTERED PROFESSIONAL PLANNER
 Saskatchewan
 Altus Geomatics Ltd. Partnership
 www.altusgeomatics.com
 Toll Free: 1-800-465-6233
 © 2018 Altus Group

Registered Professional Planner
Altus Group
 COMMUNITY PLANNING



S.W. 1/4 Section 30-33-3-W.2Mer.